

Volume 1, Issue 1

December 24, 2007



GEM STATE ATV ASSOCIATION  
OF IDAHO

# Gem State Trail Mail

## The State of Gem State ATV

---

### GEM STATE TRAIL MAIL

The official publication of the Gem State ATV Association of Idaho

Editors: Ron Stricklin & Tom Glass

<http://www.gemstateatv.org/>

Volume I, Number 1

### The State of Gem State ATV

At long last we have reached a point where we think we can put together a newsletter. We know it is long overdue. We promise to focus on statewide issues within the Gem State mission. A number of clubs have excellent newsletters with reports on rides and other local activities and we don't need to duplicate their efforts. This first issue is going out by email only but we encourage clubs to forward it on to their members or print copies for dealers and other contacts.

Nearly four years ago a group of us, several with extensive experience with the Idaho State Snowmobile Association, gathered in Lewiston, full of naive optimism. We thought we could use that experience and the strength of several large, well organized clubs to build a fully functioning statewide ATV organization in a matter of months. Didn't happen for a lot of reasons but we're still here and as Mark Twain said, "The report of our death has been greatly exaggerated."

It is obvious that we still have a ways to go but we have new clubs organizing in Pocatello and Twin Falls and an established club in Challis that has joined.

Please consider this also as a call for volunteers. It takes commitment and involvement to make any organization effective and it is especially important with one just getting off the ground. We have lots of ideas for future newsletters but it will take more than just the two of us to make it happen. We also need your feedback on what you would like to see in future issues. . Absent that, this may be the first and last newsletter.

There seems to be general consensus that Idaho needs an effective, Statewide organization to represent the interest of recreational ATV riders on legislative, regulatory, public land use planning and access issues. Only you folks can make it happen. We can no longer rely on T. O. Guy, his obituary appears elsewhere in this issue.

## What is Gem State ATV Association of Idaho?

---

What Gem State ATV Association is

Gem State ATV Association is a political umbrella group. We give clubs and individuals who are banded together a way to speak as one while dealing with Government bodies such as Forest Service and BLM.

We are all volunteers

Our main duties are to fight for access and to keep what access we have and also to keep an eye on statewide issues that affect our sport

What Gem State is NOT:

We are not a club

We have no rides

We have no parties

We do not interfere with your local club

## Message from the President

---

We have finally got a newsletter together and we want to make sure that you understand what Gem State ATV Association is and isn't.

Gem State ATV Association started when three large North Idaho ATV Clubs got together and decided that we needed to form a statewide association to represent all ATV riders on issues that will affect our sport. Soon the Whitebird ATV Club joined the association and Brenda Heckman became our treasurer and is holding that position today.

I started out as President and Mike Mallory was elected Vice President and a short time later I became ill and had to step down and Mike took over as President. About a year later Mike changed jobs and his new job didn't allow him enough time to handle the office. It was then turned over to Karen Crosby and I was then the Vice President. Soon after that Karen had some problems of her own and that put me back in the drivers seat. I know this sounds like a soap opera but no one has had a baby or been murdered.

Tom Glass of Boise is our Representative and he has been working on our by laws which we modeled after the Idaho State Snowmobile Association. Please take a look at our by-

laws. Among other things, they define the Areas listed below. You can find them on the Website.

- Jim Axtell is the Northern Area Representative.
- Clark Collins of Blue Ribbon fame has joined us as a Representative for the Eastern Idaho area.
- Norm Riddle is the Representative for area two.
- Fred Spense is the Representative for area five.

What we really need is to get clubs and individuals involved if we are to save our sport.

I served for two years as President of the Idaho State Snowmobile Association and it is outstanding what this organization has accomplished by joining together to protect their sport. We can do the same if we all band together as one unit.

Larry Waddell - email: [lcwaddell@aol.com](mailto:lcwaddell@aol.com)  
Gem State ATV Association President

PS: We are off to Arizona for fun and relaxation and will see you in the spring.

## Bylaws Update

---

Please take a look at the Bylaws on our website at [www.gemstateatv.org](http://www.gemstateatv.org). We need your ideas and suggestions. Bylaws are generally viewed as a necessary evil by most non-profit, volunteer organizations. They are written, or borrowed and adapted from another organization and reviewed, often with a once-over-lightly approach. When adopted they are then filed away and forgotten. That is until someone points out that what you are doing is in violation of your own by-laws.

How embarrassing! These are, after all, the rules that you adopted to govern the conduct of your business. There may follow a frantic search through the text looking for a hook on which to hang a justification for the action in question. Amending the by-laws to support what is already done may follow this.

We started out adapting the snowmobilers' bylaws that do not provide for club membership and require that half of a clubs' members must be ISSA members to be an "affiliated" club.

We later shortened and changed our bylaws to provide a club membership at \$250 per year. Individual/family dues are \$10.

Simple arithmetic raises some interesting questions. If a club has 10 members their individual dues would be \$100 while the club dues would be \$250, but they do get to name a Director. A club has to have 25 members to balance out dollar wise and they have a voice on the Board if they opt for club membership.

We certainly don't want to discourage either individual or club membership and we want to provide all dues paying members the opportunity to have a voice in how Gem State ATV represents their interests.

We welcome you thoughts on the dues or other sections of the Bylaws that concern you. Please send them to Tom Glass, Bylaws Committee Chair at [trg9@hotmail.com](mailto:trg9@hotmail.com) or 208-344-9749. For those still using pony express it is 701 N. 19<sup>th</sup> St., Boise, 83702

Tom Glass - email: [trg9@hotmail.com](mailto:trg9@hotmail.com)

*Bylaws are generally viewed as a necessary evil by most non-profit, volunteer organizations.*

## Clearwater Area Trail Plans

---

PLAY (Public Land Access Year-round) represents a broad spectrum of out door enthusiasts. One of their proposals is for a North-South ATV trail connecting the panhandle with Southern Idaho. The following is a report from Dave Galantuomini on the status of their plans.

The following is what is happening with the North-South trail. Due to the complications of dealing with State of Idaho Lands, Potlatch Lands and US Forest Service lands and the length of the trail. Play has decided to pull back and develop a trail between Pierce and Weippe for starters. We feel that by the time we have completed this section we will have the knowledge-legal requirements-easements and a working relationship with the landowners that will allow us to continue on with the rest of the trail. We are working on getting a govern-

ment entity to help sponsor us in the initial phases of obtaining grants, etc that a non-government club cannot obtain. Clearwater County-Pierce-Weippe-Orofino and Elk River are very supportive of the idea and plan. The first leg is mapped out but it covers mostly Potlatch land and this is where we need to line all the ducks up in a row and satisfy all Potlatch's requirements for permission-easements-etc. We feel, once this is accomplished, the rest should be easier. During the FS's (Clearwater and Panhandle Forests) travel planning we are locating trails to go with this plan for future references and hopefully the trails will be included into their plans.

Dave Galantuomini - email: dgalatu@syringa.net  
P.L.A.Y.

## Payette National Forest Travel Plan Update

---

The Payette National Forest Travel Plan FEIS says that with Alternative E we lose 11 miles of roads, 72.2 miles for 2-wheel travel and gain 32.7 miles of ATV trail. This is not true. Adams County requested information regarding how many miles of roads still exist on the PNF in their county. After repeated unanswered requests for information, Adams County filed a request under FOIA and found that 840 miles of road will be closed to travel just in Adams County. Some of the roads are in poor condition, but at least 425 miles are currently open and still very useable. Closure of these roads has not been addressed in the Travel Plan. Many are roads that were asserted by Adams County under RS 2477.

Representative Bill Sali met with concerned citizens in Council in November along with aids from Senator Craig's and Governor Otter's offices to discuss the Travel Plan and our objections to the plan and the plan process. The Adams County Court room was filled with a standing room only crowd.

*Adams County ... found that  
840 miles of road will be  
closed to travel just in Adams  
County.*

A group met with Rainville and the District Ranger in the Yellow Pine/Big Creek area to look at areas proposed for closure. Even the District Ranger didn't realize that some of the roads they drove on were scheduled for closure. It was also pointed out that some of the roads that were used by fire crews this year are only open because Valley County asserted them earlier.

NEPA requires that the Forest Service give full disclosure of the proposed changes and that a wide range of alternatives be presented. Some have called the Payette Travel Plan the worst EIS they have ever seen. Adams County and the Idaho State Snowmobile Association have both stated that they are prepared to go to court if there aren't substantial changes.

Once the Record of Decision is issued in 2008 we will have another opportunity to comment. Your voice does count. Your substantive comments are being heard by our local and federal representatives.

Becky Johnstone - email: becky@secesh.net

## Route Designation Coming To Town

---

At this time of year children's thoughts seem to turn toward the man in the furry red suit that is coming to town loaded with gifts and goodies to be found under a tree. But wait! Something else is happening too. The Forest Service is also bringing something to town in the form of a route designation

process under the new Motorized Travel Management Rule.

Have you been getting the maps and checking them twice to find out if the Forest Service is going to be naughty or nice? If not then you had better get busy!

## Route Designation (continued)

---

In 2005, the Forest Service released the final Motor Vehicle Travel Management Rule. It requires that they determine which roads, trails and areas will be designated for Motor Vehicle use. Anything that is not designated will be closed. The Lowman RD and the Cascade RD on the Boise and the Caribou National Forest have completed the first version of their Motor Vehicle Use Map (MVUM) while the rest are still working through the process. If you recreate on National Forest Land, you need to be involved and you need to understand the rule.

The rule will effect you if you use a vehicle to access or recreate on the forest. As motorized visitors to the forests, we need to be telling the Forest Service what routes are important to us and why they are important. We also need to understand what it takes to have a sustainable trail so we can help solve some of the problems that may exist while still preserving our access.

Every ATV club in Idaho should be working with their local forest to help keep routes open. Remember: The world is run

by those that show up. We need to be sure that we are at the meetings and we are writing letters. If we aren't involved in the process the ability to appeal or litigate the decision is lost. Hopefully we can avoid litigation by influencing the decisions being made but we need to be ready if litigation is necessary.

The Forest Service is a lot like a boat. It moves in the direction that it is being pushed. For years it has been pushed way from timber harvest and active forest management by environmental organizations. We can see the results in the form of dying forests, larger fires and damaged economies. Those same groups are now pushing the Forest Service away from allowing Public motorized access to the lands that we love. The only way history won't repeat itself is if we push back. We must be involved in the process to develop the initial Motor vehicle use maps and we must continue to push for future changes and revisions to the designated routes to ensure that quality motorized recreation experiences are available for our kids and grandkids. HAPPY INVOLVEMENT!

Tom Crimmins - email: [tomcrimmins@verizon.net](mailto:tomcrimmins@verizon.net)

## Directors Reports

---

### Area 6

Gem State ATV is very pleased to welcome the newest addition to our Board of Directors. President Larry Waddell has appointed Clark Collins from Pocatello as the Director-at-large for the Eastern Idaho Area.

Clark is the founder and retired Executive Director of the Blue Ribbon Coalition. He brings a nationwide reputation as a leader and organizer representing the interests of off-road recreation enthusiasts. Under his leadership Blue Ribbon became recognized as a respected national powerhouse in the field.

He submitted a comprehensive summary of his club's rides this season. The Pocatello Trail Machine Association had a very full schedule with rides in virtually every popular riding area south and east of Salmon, many that included trail work and clean up. His full report will be available on the website.

His report on PTMA's organizational issues and his decision to become a part of Gem State ATV is below.

On September 13th Clark Collins and Paul Palmer represented the Pocatello Trail Machine Association (PTMA) at an Idaho Trail Machine Association (ITMA) Board meeting in Boise. One of the hot topics at the meeting was the question

of whether or not ITMA would represent the interests of ATV riders as well as motorcycle riders. At the ITMA State Ride in July it was announced that ITMA would not represent ATV riders, but single track users only. Paul and Clark made an effort to get the Board members at the Boise meeting to reverse that decision. A final vote on this issue was deferred until an ITMA Board conference call scheduled for November 15th, but has since been postponed. Both Paul and Clark came away from the Boise meeting with the feeling that it was very unlikely that ITMA leadership would reverse the July decision.

On returning from Boise, Clark contacted other PTMA leaders about ITMA's position. The prevailing view is that it was more important for PTMA to stay united than to continue their long standing affiliation with ITMA. PTMA members contacted feel we should continue to welcome and represent the interests of both motorcycle and ATV riders. At the present time PTMA has more ATV rider members than motorcycle riders, but everyone agrees that we need to work out any differences and present a united front to our land managers and politicians.

GEM STATE ATV ASSOCIATION SOUTHEAST IDAHO REPRESENTATIVE

On October 8th the President of the Gem State ATV Associa-

## Area 6 (continued)

tion, Larry Waddell made a presentation to a small group of PTMA members at Clark & Rita Collins' house. Gem State is organized primarily to represent ATV riders in land use issues around the state. Larry explained that Gem State already has a large membership in Northern Idaho and some representation in the Boise area. They are hoping to build membership in other parts of the state. Several PTMA members, contacted on short notice about the meeting, joined at \$10 per family. Clark Collins agreed to be the Southeast Idaho Director for the Association and to represent them on land use issues in this area.

Collins has since communicated, on behalf of Gem

State ATV, with the Montpelier District of the Caribou NF to compliment them on their excellent ATV trail improvements and user information. The District has their own trail cat and have been doing a lot of ATV trail improvements with it. The Montpelier District also has an excellent downloadable trail system book in 8 1/2 X 11 format so you can print it out on a regular printer. For additional information about trails in Southeast Idaho contact Clark Collins at brclark@sharetrails.org or on his cell phone at 251-9937.

*The Montpelier District also has an excellent downloadable trail system book ...*

## Fish & Game Plan to affect ATVs

The Idaho Fish & Game Department has issued their proposed plan for the management of wolves as game animals and also revised their plan for the management of mule deer.

Idaho ATVers, both recreational riders and hunters, need to carefully review these proposed plans and make their concerns known through the review process. The agency is accepting written comments and will schedule public hearings in the coming weeks.

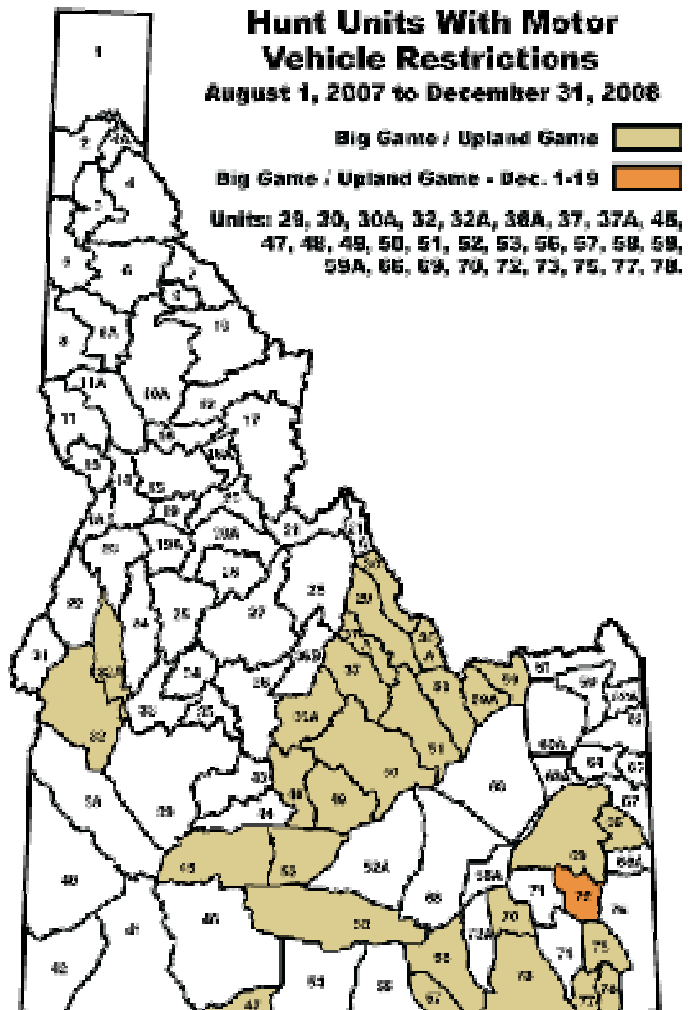
Both the wolf and mule deer plans are available at [www.fishandgame.idaho.gov](http://www.fishandgame.idaho.gov) at F&G offices or by calling 208-334-3700

Writing about the mule deer plan the following is quoted from a Nov 23 article in the Idaho Statesman.

### ATV USE

"The plan also addresses ATV use, which has increased five fold since the 1980s and is the most common complaint by hunters. The plan recognizes that there is a segment of deer hunters who rely on ATVs because they are 'getting older and less physically capable of extended hikes.' It also states that 'not all hunters enjoy ATVs.'

"F&G will use the motorized vehicle rule judiciously to ensure a balance of experiences" the plan states".



# Why Do We Need A Statewide ATV Organization (an Editorial)

*The views expressed here are those of the author and may or may not reflect the current or future position of Gem State ATV Association on issues discussed.*

To answer this question we need to look no further back than spring and summer 2006. The Idaho Transportation Department started drafting a Bill to be introduced in the 2007 Legislature to clean up the confusion concerning the licensing of ATVs and their use on State and other roads. They did not involve ATVers or the Department of Parks & Recreation that manages ATV and other OHV programs until about 90 days before the Session. Parks & Rec got the word out to ATV clubs around the State and scheduled meetings to get input. The response virtually overwhelmed the drafters. Several amendments were put forth and after a period of intense negotiations the Bill passed the House but was held by the Senate Transportation Committee.

The lesson should be obvious. A reasoned, articulate argument from a few interested parties can kill a Bill. Having played the role of objector on snowmobile issues over the years, I know it works. To craft and pass a Bill takes organization, involvement, cooperation, planning and compromise. At least as important, to make sure all these elements are brought to bear, it takes time.

The old saw about those who refuse to learn from history seems to fit here. The Legislature comes to town in about a month. There are at least two efforts underway to craft ATV Bills, neither of which has been reduced to writing. Some ATVers up north are working with their Legislators to draft a Bill to address some issues of vital concern to them. At the same time, the Sheriff's Association is working with representatives from this corner of the State and some local ATVers to draft a Bill dealing with licensing and law enforcement issues. Based on the bits of information I have been

able to glean from several sources, I doubt if I can support either of these efforts although each may include some provisions that I like.

Although my crystal ball is always cloudy it seems likely that when the details become known ATVers and other interest parties will again inundate their Legislators with a variety of objections and these efforts too will fail.

Absent major incidents, such as well publicized serious ATV accidents or resource damage we can probably continue this approach for several years while our numbers and the real or imagined problems blamed on ATVs continue to grow. Eventually, we will probably get a law we don't like if we don't get our act together. We need to reach the point where we can sponsor or co-sponsor legislation and other entities are responding to our proposals rather than the reverse. The Idaho snowmobilers do this and we can too. We have access to the same experts and advisors and we far outnumber them.

How do Idaho ATVers become a major player in this process? I suggest we start with the first two elements listed above, organization and involvement. The basic structure of a statewide organization is in place. Ideally, most recreational ATV riders in Idaho would belong to such an organization or be a member of a club that does. We have the potential to be a powerhouse in the politics of motorized recreation and public land access if we don't fritter our energy away in personal conflicts and turf battles.

Designing an organization is fairly easy. Filling it with members willing to give it life and direction is the tough part. The membership application is on the website. Will we hear the stampede of Idaho ATVers signing up or the thundering silence of apathy? It's your call.

Tom Glass - email: [trg9@hotmail.com](mailto:trg9@hotmail.com)

## Boulder-White Clouds Wilderness

The picture to the right was taken in August 1973 in an area now proposed as part of the Boulder-White Clouds Wilderness. This was a mining exploration camp on Baker Lake at the foot of Castle Peak. The camp was set up by ASARCO mining company. The mining camp is gone now, but the bridge and bulldozed road remain. You can read how this came about at [http://www.wildwhiteclouds.org/news\\_mining\\_castlepeak.html](http://www.wildwhiteclouds.org/news_mining_castlepeak.html). My question is how this fits in the wilderness concept... The area is definitely 'trammelled' by man yet is included in the "wilderness" designation (untrammelled by man). I also recall a cabin downstream from Willow Lake. Ron Stricklin



Wilderness in the proposed Boulder-White Clouds "Wilderness" Area.—  
August 1973

## GEM STATE ATV ASSOCIATION OF IDAHO

Membership Applications & contributions to:  
Gem State ATV Association  
Brenda Heckman, Treasurer  
P.O. Box 53  
White Bird, ID 83554

Newsletter articles or Association questions to:  
Gem State ATV Association  
Attn. Tom Glass  
1810 W. State St. #108  
Boise, ID 83702

The Gem State ATV Association works to support positive ATV legislation and regulations.

## Officers & Directors

Title	Name	email
President	Larry Waddell	lcwaddell@aol.com
Secretary	Edie Riddle	
Treasurer	Brenda Heckman	eanda@wildblue.net
Area 1 Director	Jim Axtell	axtelljs@verizon.net
Area 2 Director	Norm Riddle	
Area 3 Director	Tom Glass	trg9@hotmail.com
Area 4 Director	Pending	
Area 5 Director	Fred Spence	faspence@qwest.net
Area 6 Director	Clark Collins	brclark@sharetrails.org
Newsletter	Ron Stricklin	newsletter@gemstateatv.org



ATV Rider on the Danskin Trails near Boise

We're on the Web!  
[www.gemstateatv.org](http://www.gemstateatv.org)



ATV Riders on the dunes at St. Anthony

## Challis, Idaho—ATV Friendly

Gary Kimble, President of the Challis ATV club just informed us that the Challis City Council has passed an Ordinance to allow ATVs to travel on their city streets. Copies of

the Ordinance are available from him at <fishon@custertel.net> if you would like to propose something similar in your town.

## Sad News

It is with great sadness that we report the death of a Charter Member and long-time willing worker. T. O. (THE OTHER ) GUY, known to all of us as "Old T.O." passed away quietly in his sleep last week. During his long involvement with our organization he has served in every office and chaired every committee. Cause of death is not know but it is suspected that he succumbed to the weight of the responsibilities that were heaped



The Other Guy leaving town.

upon him.

T.O.'s name was always mentioned whenever there was a job to be done. Prior to our last election the Chair of the Nominating Committee who is responsible for finding candidates for our organization's officer and Director positions, told us that Old T.O.'s name was suggested for every

job. He will be sorely missed and with his passing we must all put forth extra effort to help pick up the load.

*Editors note...*

*T.O.'s nephew, Some One-else has been missing for the past 2 years. Rumor has it he got a job working for the Idaho Conservation League.*